

# SONNET 3

## Pairing to Smartphone

SONNET 3 can connect wirelessly to devices with Made for iPhone (MFi) or Audio Streaming for Hearing Aids (ASHA) technology. You first need to pair SONNET 3 with the device (you only need to do this once):

1. Switch off SONNET 3(s), wait 2 seconds, then switch back on. Place within 3cm of phone.

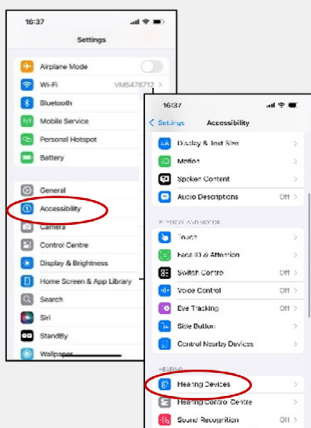


2. Switch on Bluetooth on your device.

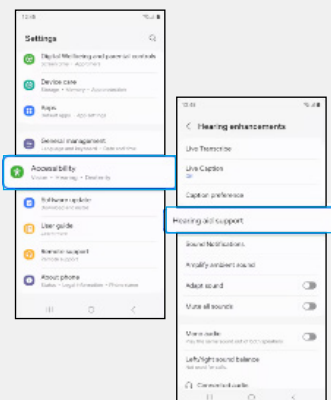


3. If you have an Android: stay on the Bluetooth menu and go to step 4.

If you have an iOS: Go to Accessibility, then Hearing Devices. Switch MFi Hearing Devices to on.

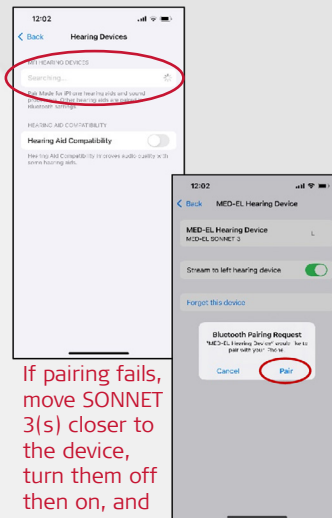


If you have a Samsung Galaxy: select Settings > Accessibility > Hearing Enhancements > Hearing aid support > Bluetooth hearing aids



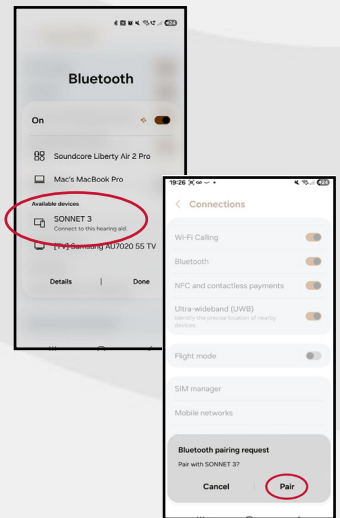
4. Select SONNET 3(s) when they appear. A Bluetooth pairing request screen will appear. Tap Pair.

iOS



If pairing fails, move SONNET 3(s) closer to the device, turn them off then on, and try again.

Android



Scan the QR code to watch a video on connecting your SONNET 3 to an iOS device.



Scan the QR code to watch a video on connecting your SONNET 3 to an Android device.

For more information email [customerservice@medel.co.uk](mailto:customerservice@medel.co.uk) or call us on 0330 123 5601.