


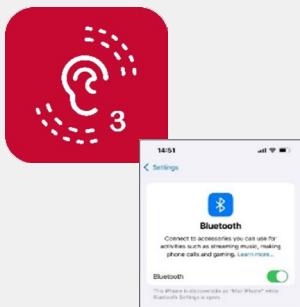
# SONNET 2 AudioStream

## Pairing & Configuring (Android)

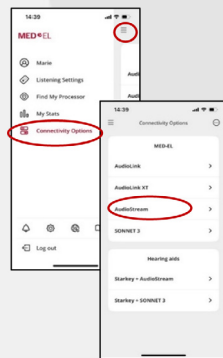
To stream sound via the AudioStream, you first need to configure and pair it. After you have done this once, the AudioStream will connect automatically whenever it is on your SONNET 2, and Bluetooth is enabled on your phone.

Please ensure you use a battery pack frame or rechargeable battery adapter with this symbol .

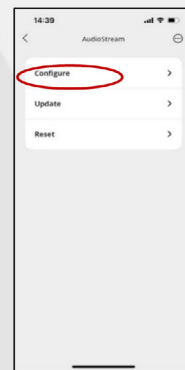
1. On your phone download the latest version of the AudioKey app. Turn on Bluetooth and Location Services.



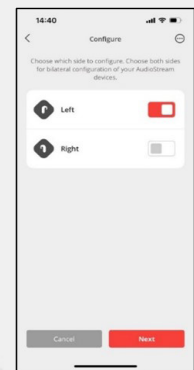
2. Open the AudioKey app, go to left-hand menu and select Connectivity Options. Select AudioStream.



3. Select Configure, then tap Next.



4. Select the side(s) you wear it on. Then tap Next.



5. Slide the AudioStream onto your SONNET 2, then press Next.

Repeat this with your second SONNET 2, if you have one.

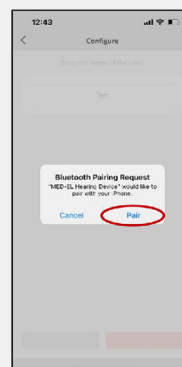


If configuration fails, move SONNET 2 (s) closer to the phone, remove AudioStream then slide back on, and press "Try again".

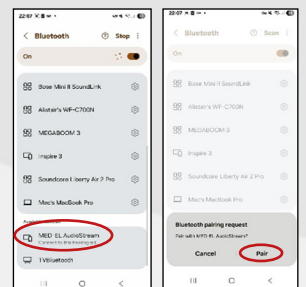
6. Enter a username with 7 or fewer letters. Tap Save.



7. If a Bluetooth pairing request screen appears, tap Pair. Repeat for your second AudioStream if you have one. Then tap Ok, then exit the app.



8. Connect the AudioStream in the Bluetooth menu of your phone.



For Samsung Galaxy phones, select Settings > Accessibility > Hearing Enhancements > Hearing aid support > Bluetooth hearing aids



Scan the QR code to watch a video on connecting your SONNET 2 and AudioStream.

For more information email [customerservice@medel.co.uk](mailto:customerservice@medel.co.uk) or call us on 0330 123 5601.