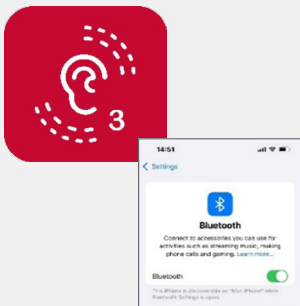


# RONDO 3 AudioStream Adapter Pairing & Configuring (iOS)

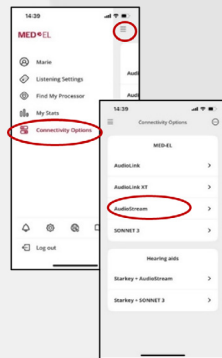
To stream sound via the AudioStream Adapter, you first need to configure and pair it.

After you have done this once, the AudioStream Adapter will connect automatically whenever it is plugged in, your RONDO 3 is on, and Bluetooth is enabled on your phone.

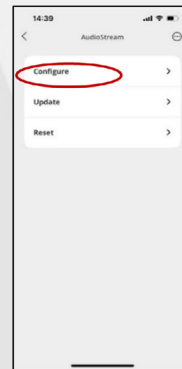
1. On your phone download the latest version of the AudioKey app. Turn on Bluetooth and Location Services.



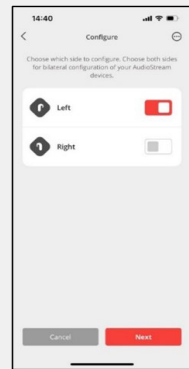
2. Open the AudioKey app, go to left-hand menu and select Connectivity Options. Select AudioStream.



3. Select Configure, then tap Next.



4. Select the side(s) you wear it on. Then tap Next.



5. Plug the AudioStream Adapter into RONDO 3, then press Next.

Repeat this with your second RONDO 3, if you have one.



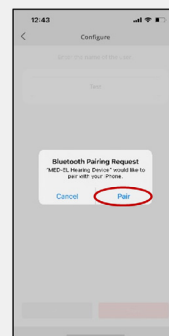
If configuration fails, move RONDO 3 closer to the phone, unplug then plug in the AudioStream Adapter, and press "Try again".

6. Enter a username with 7 or fewer letters. Tap Save.

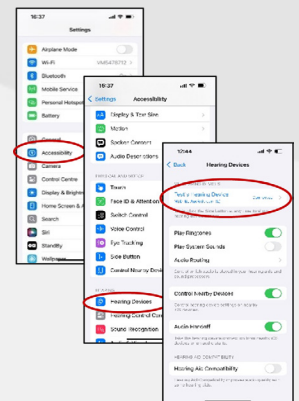


7. A Bluetooth pairing request screen will appear. Tap Pair. Repeat for your second AudioStream Adapter if you have one.

Then tap Ok, then exit the app.



8. Go to Settings, then Accessibility, then Hearing Devices. Tap on the section under 'MFi Hearing Devices'. After a few seconds, it will show the AudioStream Adapter is connected.



Scan the Qr code to watch a video on connecting your RONDO 3 and AudioStream.

For more information email [customerservice@medel.co.uk](mailto:customerservice@medel.co.uk) or call us on 0330 123 5601.