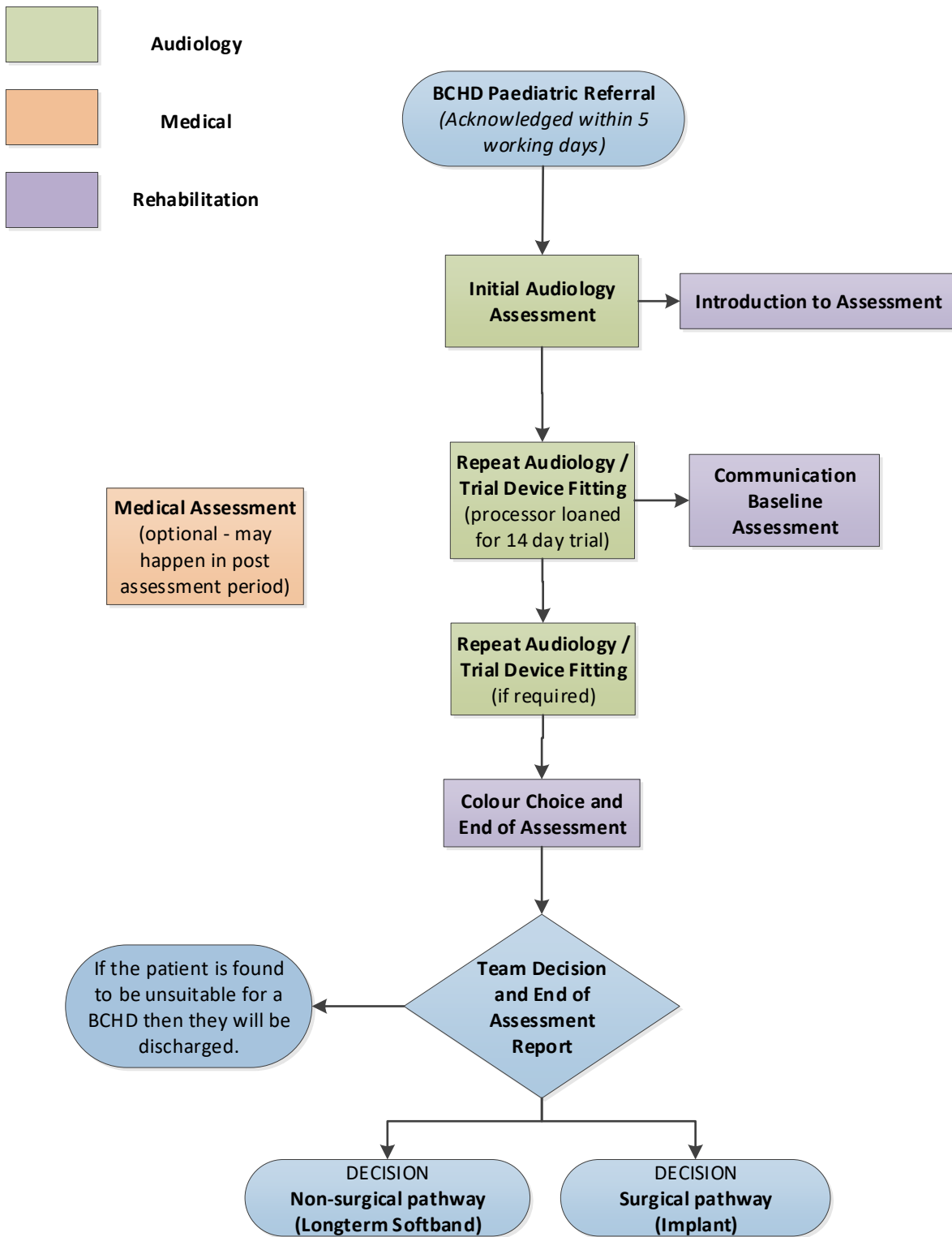


## Schedule of assessment appointments for BCHD Children



# Description of Appointments

**Initial Audiology Assessment** – Your child will be seen one of the Specialist BCHI Audiologists with the Key Contact and they will assess your child's hearing and any benefit they get from their hearing aids.

**Introduction to Assessment/Key Contact** – You will meet with a Teacher of the Deaf/Speech and Language Therapist working at the Service. You will be given some information about what to expect during the assessment and some information about Bone Conduction Hearing Implants and Devices.

If you will be proceeding with the assessment you will be offered appointments in due course. These appointments will include:

**Repeat Audiology Assessment / trial device fitting** – During this appointment we will fit your child with a trial device to wear for a two week trial period.

**Communication Assessment** – A Rehabilitationist will carry out some activities with your child to help us assess the benefit they might get from a Bone Conduction Hearing Device. We will also make contact with your local Teacher of the Deaf and Speech and Language Therapist.

After the trial period if you wish to proceed we will invite you back for a further set of appointments

**Repeat Audiology Assessment / trial device fitting** – review of the trial period and second trial if needed – if there are no concerns and the trial was satisfactory then this appointment may be cancelled.

**Medical Assessment** – This is optional and it may happen in post assessment period. You will meet one of our Consultant ENT Surgeons who will ask you about your child's health and history. He will explain to you about the surgery and you can ask him any questions.

**End of Assessment** – The key contact will go through a checklist to make sure that you have all the information you need to decide if you wish your child to proceed to a BCHD fitting.

**Colour Choice Meeting** – You will be able to select the colour of the device and accessories.

**Team Decision** - When the assessment is complete we will have a BCHI Panel Meeting who will discuss your child's potential to benefit from a BCHD and a recommendation will be made.

The main aim of the assessment process is to provide you with more details about your child's hearing, to help with understanding their needs which in turn may lead to clarification about the best methods of helping your child. This may include long term use of a BCHD on a softband or implantation with a fixture as well as alternative options. We will try to make the whole process as stress free as we can, but please feel you can contact us at any time to query something. All assessments take time for us to be sure that we are offering you the best professional advice. However, if at any stage you do not wish to continue, please feel you can contact us and request a delay or discontinue the assessment process.